

Basel, Wolf.

Working smart. Urban living.

A new neighbourhood is being built in the northern part of the Wolf freight station: Wolf Basel. An approximately 16-hectare area that is currently occupied by a loading platform, 'City-Logistik' and a container terminal, among other things, will be available in future. This area will be used for commerce, offices, apartments and as space for living.

Plot area
160 000 m²

Floor area
210 000 m²

Investment volume
CHF 570 000 000.–

Address
Güterbahnhof Wolf
4052 Basel

Total main usable area	210 000 m²
Living	73 500 m ²
Office/Commercial/Center	40 500 m ²
Sales/Gastronomy/Service	4 000 m ²
City-Logistic/Logistics	62 000 m ²
Basement	30 000 m ²

Building zone
Central zone with development plan

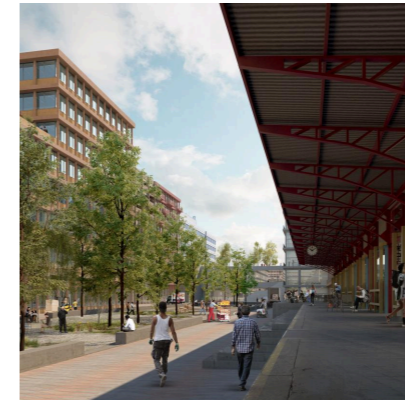
Deadlines
Development plan 2023
Construction start 2027
Completion 2030

Project phase
Competition

Architect
Christ & Gantenbein
4056 Basel

Project manager
Samuel Pillichody
+41 79 589 55 79
samuel.pillichody@sbb.ch

wolf-basel.ch



Version: 10 August 2023