

Zurich, 23/25.

Urban living comfort in Limmatstrasse.

At Limmatstrasse 23/25, in the middle of Zurich's district 5 and just a few steps away from Zurich main station, a new building is being constructed with office and service space on the ground floor and first floor, and studios and 1.5-room to 3.5-room apartments on the upper floors. Here you can enjoy a rapid changeover from city life to a residential idyll.

Plot area

983 m²

Floor area

4 950 m²

Investment volume

CHF 16 620 000.–

Address

Limmatstrasse 23-25
8005 Zürich

Main usable area

Living
Offices/service

Building zone

Central zone

Deadlines

Preliminary project
Construction project
Start of operations

2019
2021
2023

Project phase

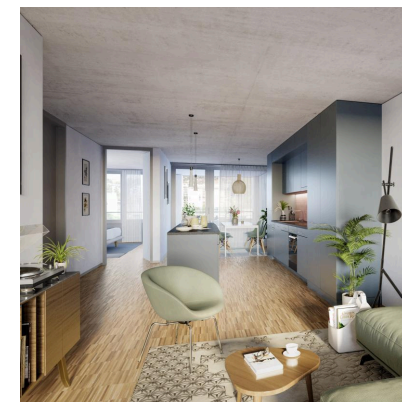
Management

Project number

1157797

Real estate Manager

SBB AG
Anna Apananskaja
anna.apananskaja@sbb.ch



Version: 11 January 2024